

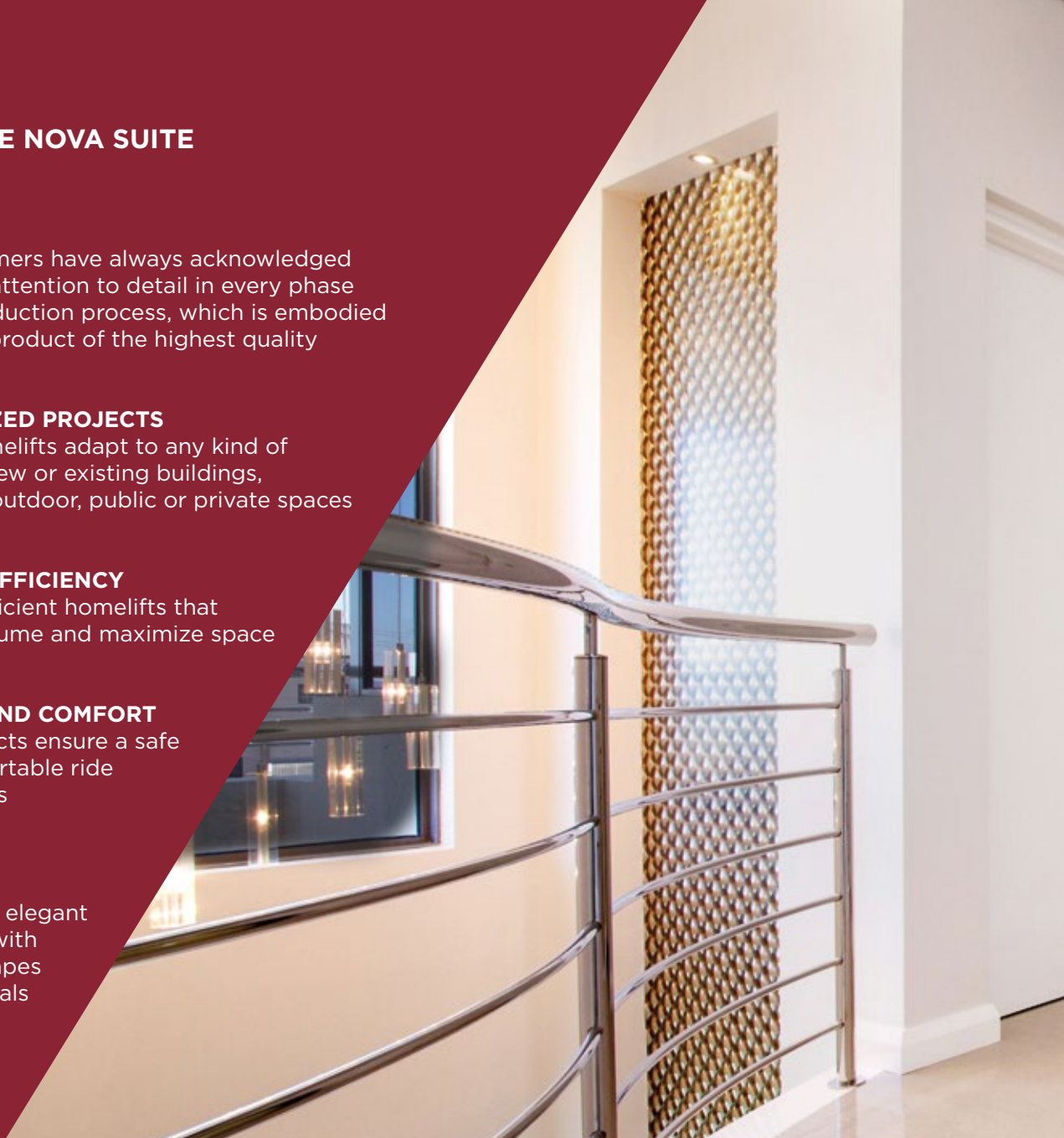


SUITE[®], THE HOMELIFT



WHY CHOOSE NOVA SUITE

- ➔ **QUALITY**
Our customers have always acknowledged our great attention to detail in every phase of the production process, which is embodied by a final product of the highest quality
- ➔ **CUSTOMIZED PROJECTS**
NOVA homelifts adapt to any kind of location: new or existing buildings, indoor or outdoor, public or private spaces
- ➔ **ENERGY EFFICIENCY**
Energy-efficient homelifts that reduce volume and maximize space
- ➔ **SAFETY AND COMFORT**
Our products ensure a safe and comfortable ride for all users
- ➔ **DESIGN**
Classy and elegant homelifts with refined shapes and materials





WHY SHOULD YOU CHOOSE THE SUITE HOMELIFT?

NOVA Suite homelifts are specifically designed to improve mobility inside buildings, adapting perfectly to every type of need and every location.

They allow to overcome architectural barriers and improve the quality of life of users, without renouncing the Made in Italy design that adds value to the building.

Our homelifts can either be installed in a masonry shaft or metal structure, both indoors and outdoors.

They ensure a smooth and silent ride, preserving the highest quality standards for all users, such as the automatic return-to-floor in case of power failure.

All our products are manufactured with the utmost attention to energy efficiency and environmental protection, with a view to reducing consumption and air pollution.

 *Made in Italy*

INDOOR AND OUTDOOR

Suite homelifts can be installed both inside and outside the building, adapting to any location and maximizing accessibility. Indoors you can install the homelift inside your house or in a dedicated metal structure, with a wide variety of options.

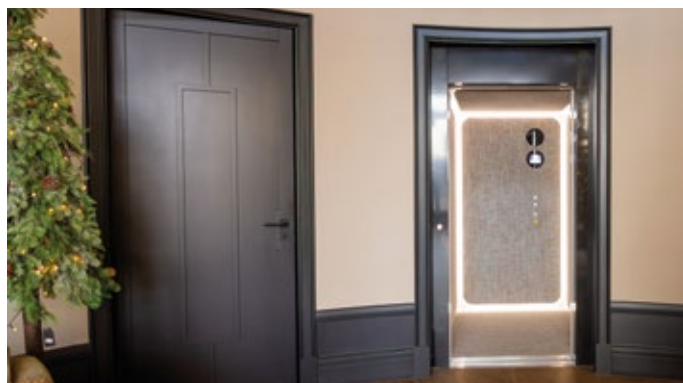
It is also possible to install homelifts outdoors, turning a balcony or a window into entrances for the lift.



MASONRY SHAFT AND METAL STRUCTURE

Suite homelift cabin moves either inside a masonry shaft or a metal shaft.

NOVA's metal structures present a variety of solutions with glass and metal profiles suitable for any type of project, including the possibility to fit into small stairwells, starting from just 68 cm in width.



SWING DOORS AND AUTOMATIC DOORS

Swing doors (both with and without glass) or automatic sliding doors can be installed on all NOVA Suite homelifts, adapting to any type of need.

All doors are available in a wide variety of finishes and customization options, in order to create harmony with the surrounding environment.

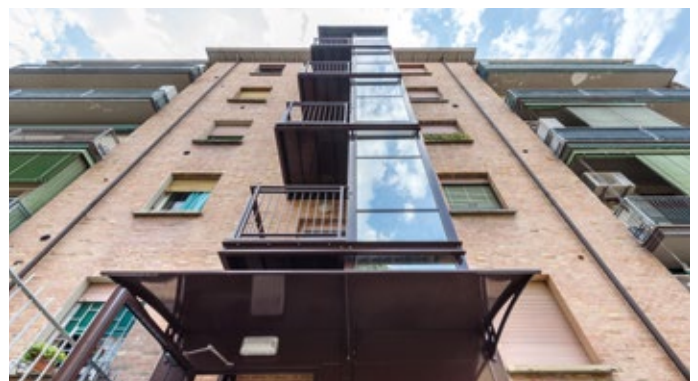


GEARLESS AND HYDRAULIC HOMELIFTS

Suite homelift is available in two versions: hydraulic and gearless.

Gearless Suite homelift ensures high energy efficiency (<0,75 KW with 230V, similar to any electrical appliance), optimizing the levels of power consumption in real time depending on the use.

The hydraulic version allows the highest level of flexibility in terms of size both indoors and outdoors.





SKINPLATE

- White marble-look walls in PPS10
- White ceiling
- "Nero" PVC flooring
- LED "Panel" cabin lighting
- Flat COP

CLASSIC Series



SKINPLATE

- Mirror-look walls in N3PP black gloss
- White ceiling
- "Nero" PVC flooring
- 4 x LED Downlights
- Flat COP



SKINPLATE

- Matt-texture walls in A4 milk white
- White ceiling
- "Blu" PVC flooring
- 2 x LED Downlights
- Flat COP



SKINPLATE

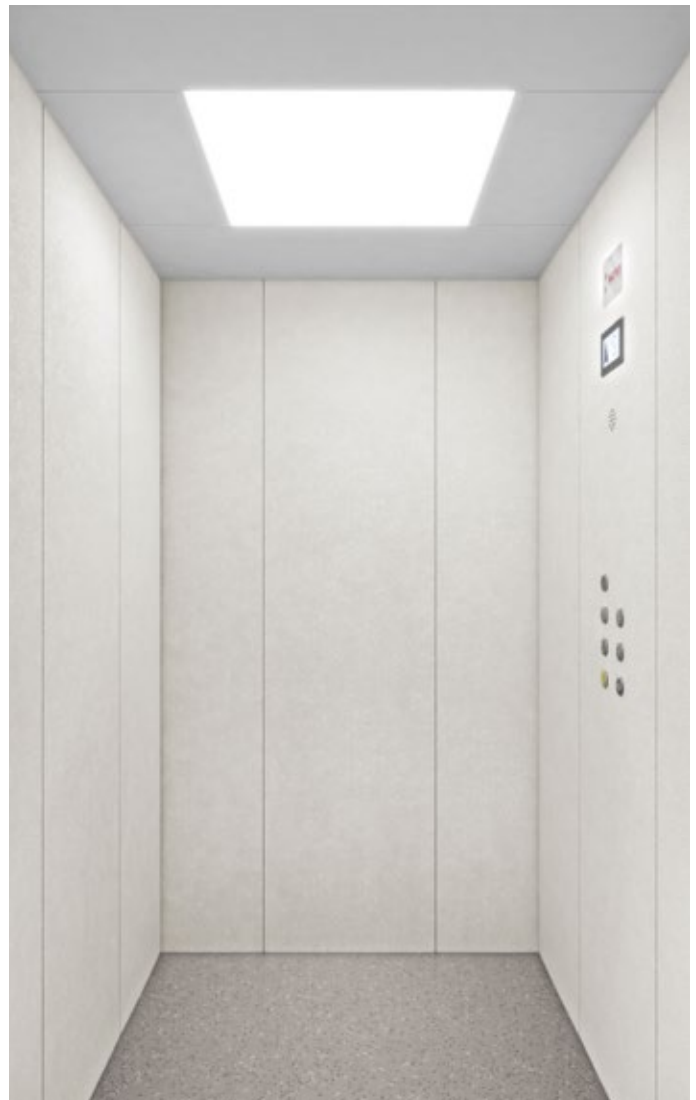
- Satin stainless steel-look walls in F12PPS
- White ceiling
- "Ghiaccio" PVC flooring
- 2 x LED Downlights
- Flat COP
- Basic mirror 740 x 1050 mm
- Stainless Steel Handrail with curved ends

CLASSIC Series



SKINPLATE

- Matt-texture walls in A13 beige
- White ceiling
- "Sabbia" PVC flooring
- 2 x LED Downlights
- Flat COP



SKINPLATE

- Matt-texture walls in N1 light grey
- White ceiling
- "Grigio" PVC flooring
- LED "Panel" cabin lighting
- Flat COP

The image shows the interior of an elevator. The walls are covered in light-colored, wood-grain plastic laminate panels with horizontal black inserts. The ceiling is white. On the right side, there is a control panel with several buttons and a small display. The floor is dark. A red sign is visible on the right wall.

HORIZONTAL PANELS PLASTIC LAMINATE

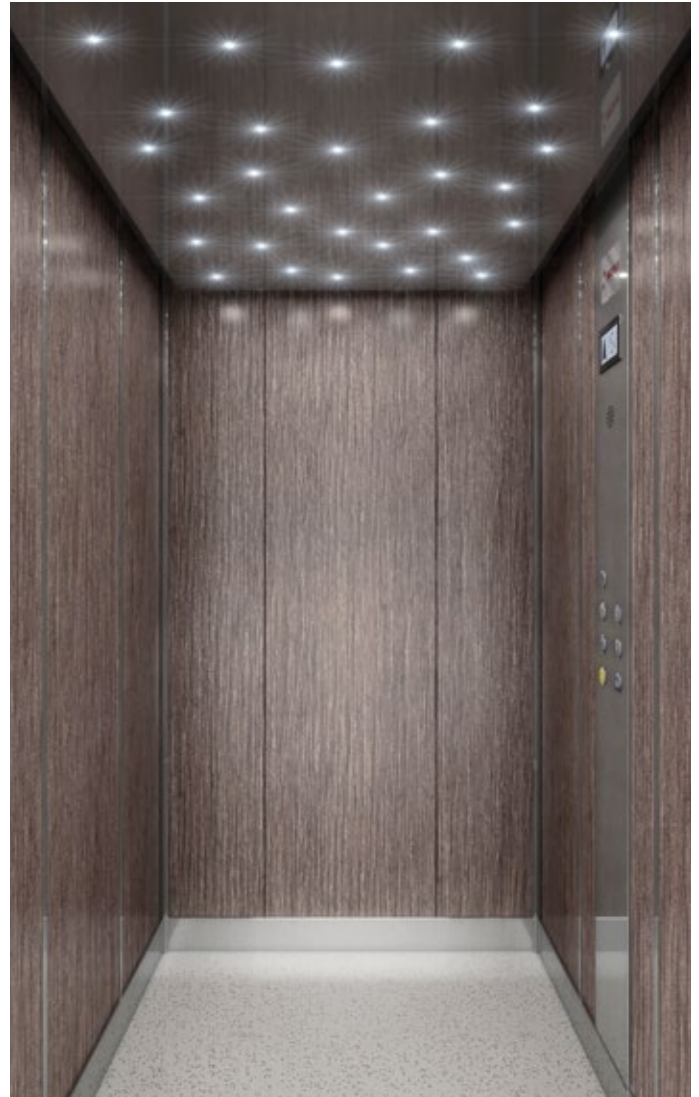
- Wood-look walls in "Douglas Ice 388 Microline"
- Black inserts
- White ceiling
- "Nero" PVC flooring
- LED "Panel" cabin lighting
- Satin Stainless Steel COP

SUPERIOR Series



HORIZONTAL PANELS PLASTIC LAMINATE

- Wood-look walls in "Douglas Vanilla 381 Microline"
- Black inserts
- White ceiling
- "Sabbia" PVC flooring
- 4 x LED Downlights
- Polished Stainless Steel COP



VERTICAL PANELS PLASTIC LAMINATE

- Wood-look walls in "Teak Sumatra 1612 Root"
- Polished Stainless Steel ceiling
- "Ghiaccio" PVC flooring
- Suspended LED cabin lighting "Zodiaco"
- Polished Stainless Steel COP and cabin finishes
- Cabin height = 2100 mm



BLACK DIAMOND

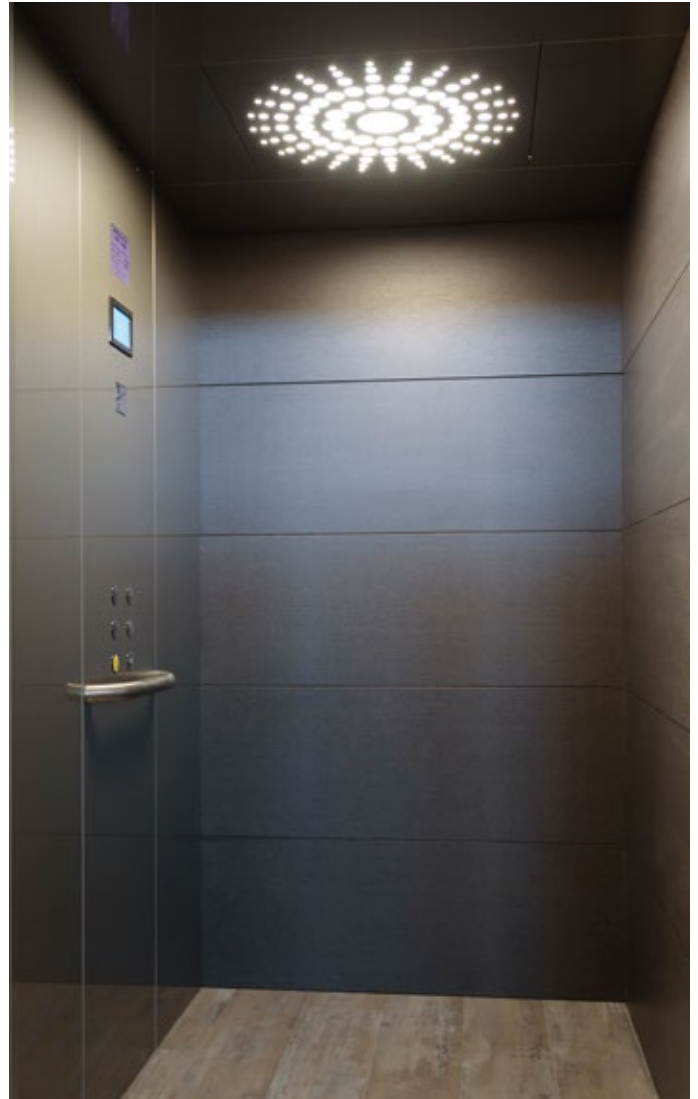
- Mirror-effect left wall and ceiling in N3PP black gloss
- Mirror-effect right wall in A32PP white gloss
- Full-Width, Full-Height mirror on back wall
- "Ghiaccio" PVC flooring
- "Black Diamond" LED lighting
- Flat COP

EXCLUSIVE Series



POTTER'S CLAY

- Wood-look back and side walls in "Douglas 387 Microline"
- COP cabin wall and ceiling in Polished Stainless Steel
- "Silver Concrete Eternal Material 13002" PVC flooring
- "Potter's Clay" LED lighting
- Flat COP



SHARK SKIN

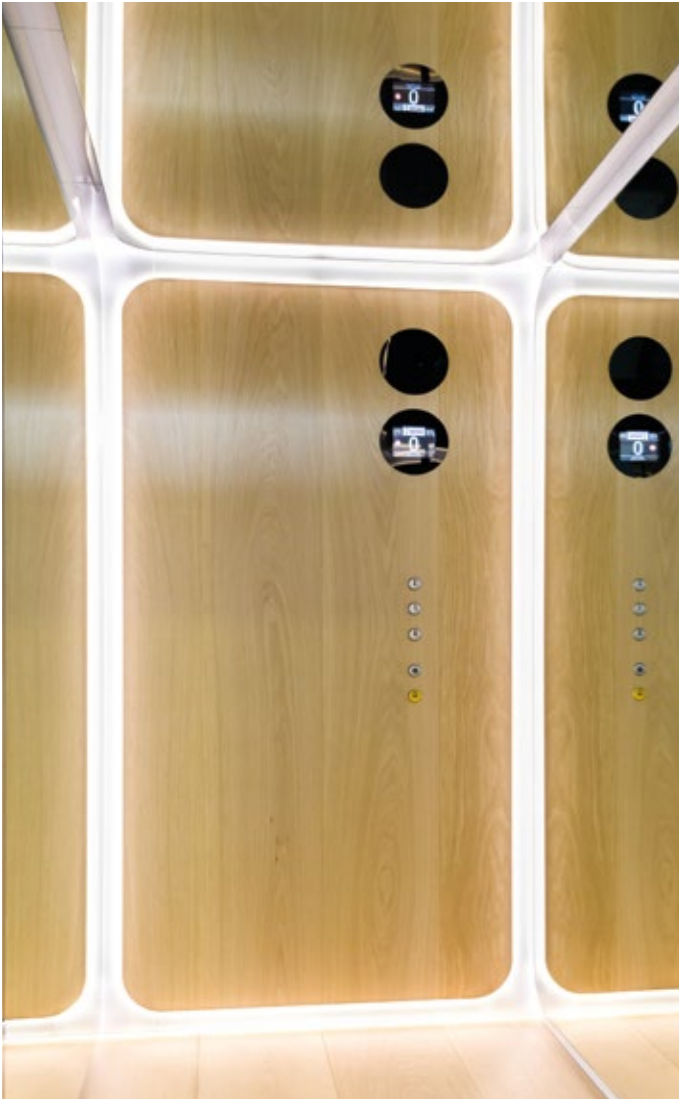
- Wood-look back and side walls in "Rovere Tennessee 656 Holz"
- COP cabin wall and ceiling in F12PPS
- "Eternal Wood Light Oak 13442" PVC flooring
- "Shark Skin" LED lighting
- Curved handrail in Stainless Steel
- Flat COP



COSY TIME

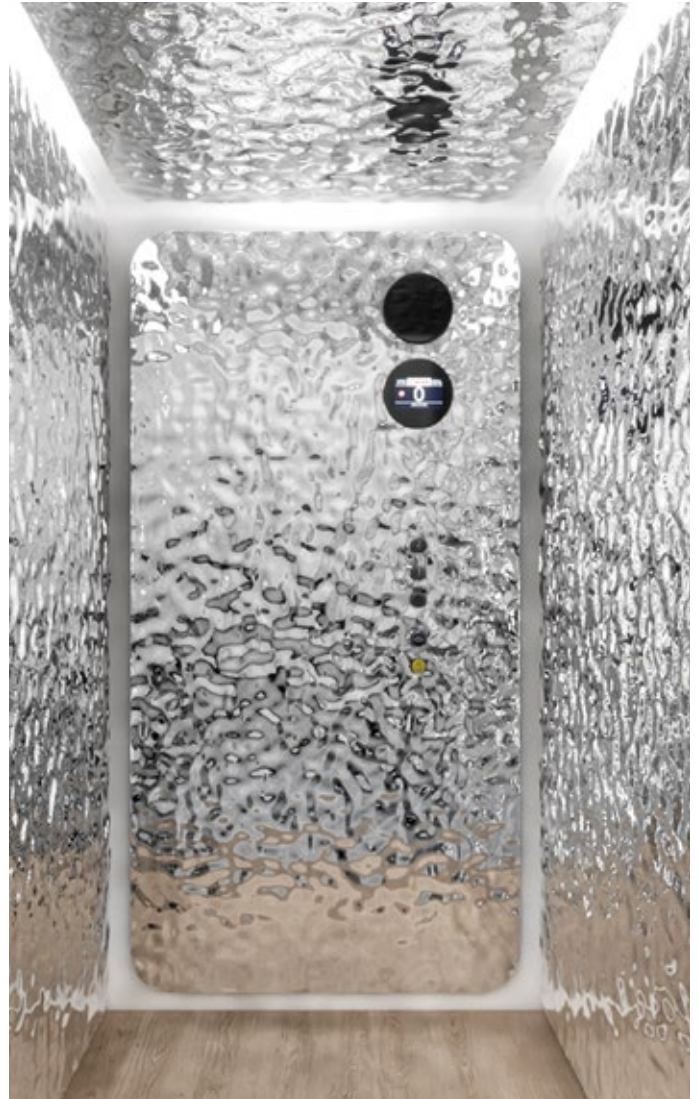
- Side walls, back wall, suspended ceiling and flooring in "Floover Woven WW1209-10" fabric-look
- Suspended LED cabin lighting
- Round multicolor display
- Round duty load display
- Flat COP
- Cabin height = 2100 mm

EXCLUSIVE Series



BALANCE SPACE

- Full-Width, Full-Height mirror on side walls
- Back wall in "Rovere Stilnovo" natural wood
- Mirror suspended ceiling
- "Rovere Stilnovo" natural wood flooring
- Suspended LED cabin lighting
- Round multicolor display
- Round Duty Load plate
- Flat COP
- Cabin height = 2100 mm



REWIND

- Side walls, suspended ceiling, back wall in wavy Polished Stainless Steel
- "Rovere Velvet Maxi" natural wood flooring
- Suspended LED cabin lighting
- Round Multicolor Display
- Round Duty Load plate
- Flat COP
- Cabin height = 2100 mm

SWING DOORS



EMMA

BLIND IN RAL PAINTED STEEL
AVAILABLE IN THERMAL RESISTANT VERSION 2,4 W/mqK



ANNA

RAL PAINTED STEEL WITH VERTICAL PANORAMIC
WINDOW AND FLUSH HANDLE



MARYLIN

GLAZED RAL PAINTED STEEL WITH FLUSH HANDLE
AVAILABLE IN THERMAL RESISTANT VERSION 2,4 W/mqK



GRETA

RAL PAINTED WITH FULL PANORAMIC WINDOW
AND FLUSH HANDLE



LUMINA IN ALUMINIUM

PANORAMIC ANODIZED ALUMINIUM DOOR
WITH FLUSH HANDLE



LUMINA IN PAINTED ALUMINIUM

PANORAMIC RAL PAINTED ALUMINIUM DOOR
WITH FLUSH HANDLE



GRAPH

PAINTED IN RAL 9010 PURE WHITE



KRYSTAL

PANORAMIC
CLEAR GLASS OR MILK WHITE GLASS



The images displayed in this catalogue are for illustrative purposes only and do not bind the Company. The colours of the finishes may differ as compared to those in the printed images. The materials displayed in this catalogue are subject to change. For the updated range of colours and materials, please visit our website: www.novaelevators.it/en.

AUTOMATIC DOORS



FOLDING
STAINLESS STEEL



FOLDING
GLASS



SLIDING
BLIND PANEL
FOR CABIN AND LANDING
SIDE OR CENTRE OPENING
PAINTED IN RAL 9010 PURE WHITE



SLIDING
FRAMED GLASS
FOR CABIN AND LANDING
SIDE OR CENTRE OPENING
PAINTED IN RAL 7047 TELEGREY

GLASS COLORS FOR SWING DOORS



CLEAR



SMOKED GREY



MILK WHITE



BRONZE



MIRROR

HANDLES FOR SWING DOORS



ALUMINIUM HANDLE




CURVED STAINLESS
STEEL HANDLE



"C" SHAPED
ALUMINIUM HANDLE



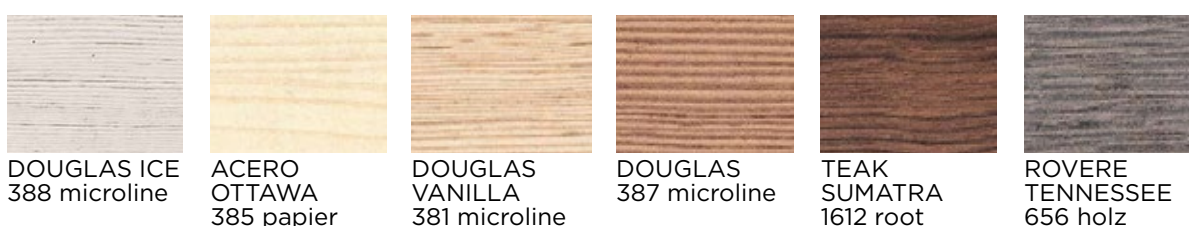
FLUSH
HANDLE

 The images displayed in this catalogue are for illustrative purposes only and do not bind the Company. The colours of the finishes may differ as compared to those in the printed images. The materials displayed in this catalogue are subject to change. For the updated range of colours and materials, please visit our website: www.novaelevators.it/en.

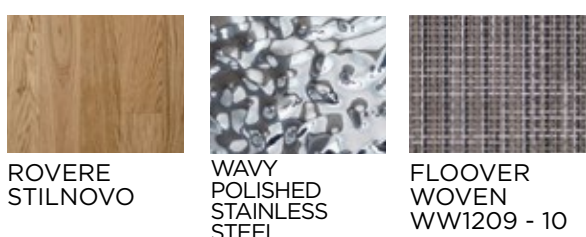
SKINPLATE



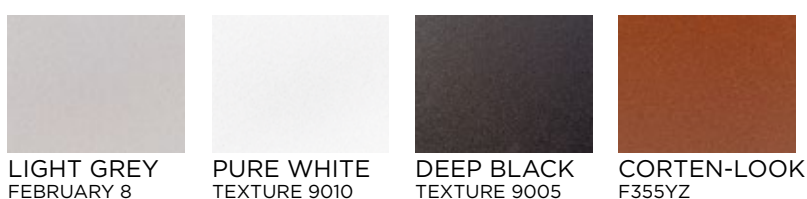
PLASTIC LAMINATE FOR SUPERIOR



WOOD, STEEL AND FABRIC-LOOK FOR EXCLUSIVE

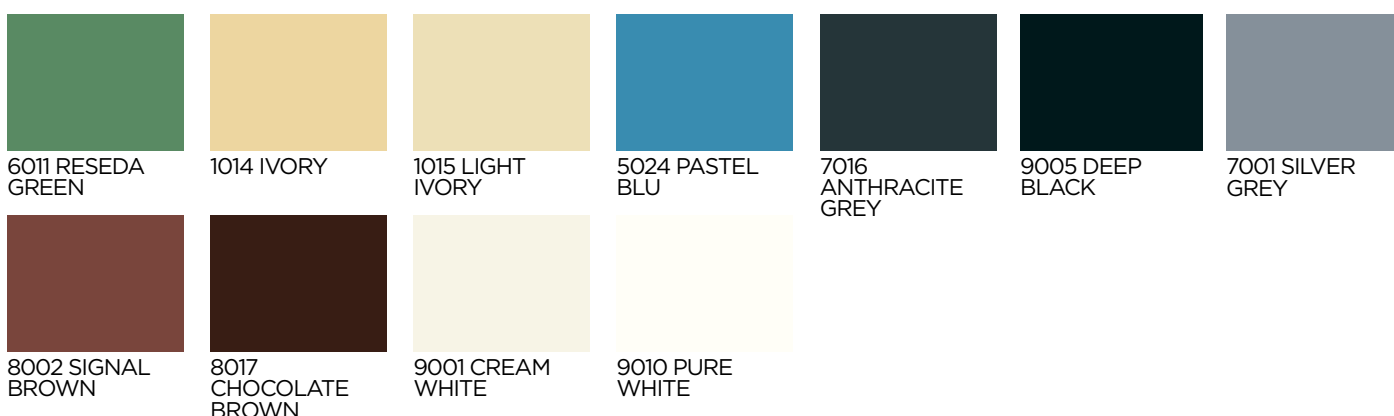


TEXTILE MATT FINISH OPTIONAL



NEW

RAL COLORS BASIC



STAINLESS STEEL ON REQUEST



SATIN
STAINLESS STEEL



POLISHED
STAINLESS STEEL



GOLD
STAINLESS STEEL



LINEN
STAINLESS STEEL

PANORAMIC WINDOWS

FULL WIDTH, MID-HEIGHT WINDOW



FULL WIDTH, FULL-HEIGHT WINDOW



2 FULL WIDTH, FULL-HEIGHT WINDOWS

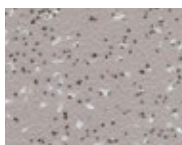


The images displayed in this catalogue are for illustrative purposes only and do not bind the Company. The colours of the finishes may differ as compared to those in the printed images. The materials displayed in this catalogue are subject to change. For the updated range of colours and materials, please visit our website: www.novaelevators.it/en.

PVC FOR CLASSIC



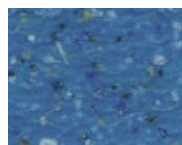
GHIACCIO



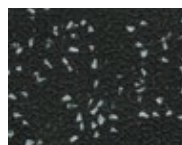
GRIGIO



SABBIA



BLU



NERO



STUDED RUBBER FOR CLASSIC



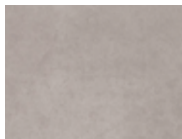
G3 BOLLI
(BLACK)



G1 BOLLI
(GREY)



PVC FOR SUPERIOR



SILVER
CONCRETE
ETERNAL
MATERIAL 13002

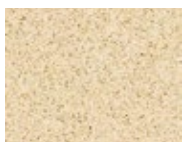


ETERNAL
WOOD
LIGHT OAK
13442

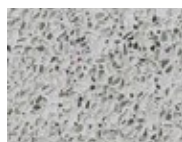
GRANITE FOR SUPERIOR



WHITE STAR



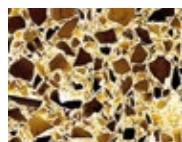
CREMA LUNA



DOVE TAIL



BLACK DIAMOND



CHIARO AMBRA

NATURAL WOOD FOR EXCLUSIVE



ROVERE
STILNOVO



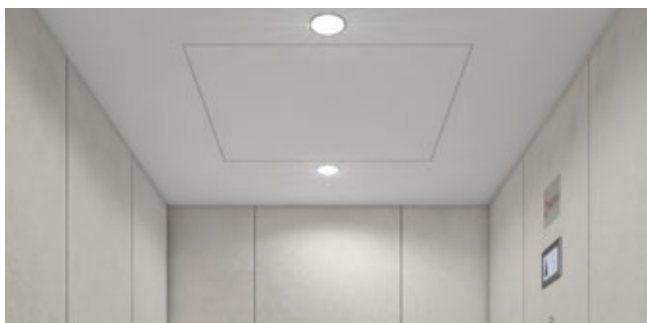
ROVERE
VELVET MAXI

FABRIC-LOOK FOR EXCLUSIVE



FLOOVER
WOVEN
WW1209-10

LIGHTING



2 x LED DOWNLIGHTS FLUSH



4 x LED DOWNLIGHTS FLUSH



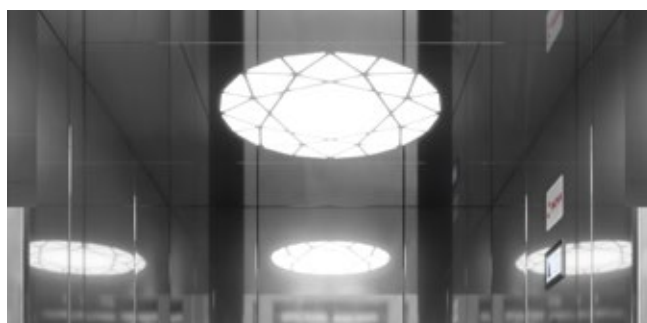
LED PANEL FLUSH



LED SOFT SUSPENDED *



LED ZODIACO SUSPENDED *



LED BLACK DIAMOND FLUSH



LED POTTER'S CLAY FLUSH



LED SHARK SKIN FLUSH

! * Cabin Height required > H. 2100 mm due to suspended ceiling.

! The images displayed in this catalogue are for illustrative purposes only and do not bind the Company. The colours of the finishes may differ as compared to those in the printed images. The materials displayed in this catalogue are subject to change. For the updated range of colours and materials, please visit our website: www.novaelevators.it/en.

HANDRAILS

STAINLESS STEEL HANDRAIL
WITH CURVED ENDS ON COP LENGTH: 480 MM

STAINLESS STEEL HANDRAIL WITH STRAIGHT ENDS

STAINLESS STEEL HANDRAIL WITH CURVED ENDS

COMFORT INSIDE THE CABIN

AXIAL CABIN FAN
(DIAMETER Ø110 AIR FLOW 60 M³/H)

CROSS-FLOW CABIN FAN
(LENGTH 300 MM AIR FLOW 360 M³/H)

FOLDABLE SEAT
IN WHITE PLEXIGLASS

CABIN MIRROR
FULL-WIDTH, FULL-HEIGHT



MIRRORS



BASIC MIRROR

840 x 1050 mm



HALF WALL MIRROR

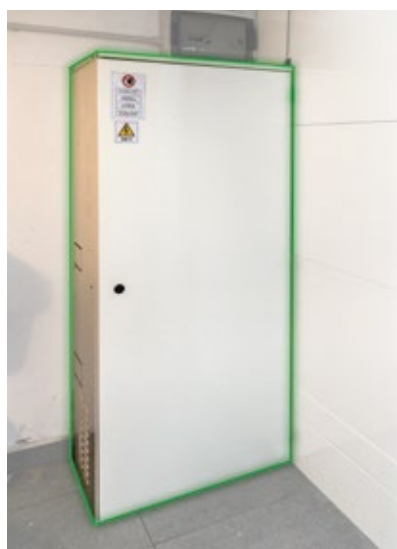
CABIN WIDTH x 1050 mm



FULL-WIDTH, FULL-HEIGHT MIRRORS

CABIN WIDTH x CABIN HEIGHT

CABINETS



FOR HYDRAULIC MODEL *

SMALL: 600 x 360 x 1400 mm
MEDIUM: 750 x 410 x 1400 mm
LARGE: 850 x 510 x 1500 mm



FOR GEARLESS MODEL *


DIMENSIONS: 250 x 120 x 2100 mm

DOOR OPENING



AUTOMATIC OPENING SYSTEM FOR SWING DOORS

* BASIC SUPPLY: GALVANIZED METAL SHEET. OPTIONAL FINISHES: SKINPLATE A1, SATIN STAINLESS STEEL

 The images displayed in this catalogue are for illustrative purposes only and do not bind the Company. The colours of the finishes may differ as compared to those in the printed images. The materials displayed in this catalogue are subject to change. For the updated range of colours and materials, please visit our website: www.novaelevators.it/en.

RESTRICTED ACCESS



1

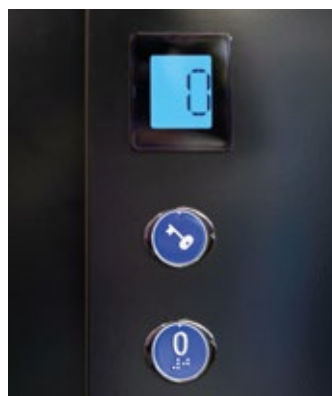
ENABLING KEY AT LANDING

ONLY THE KEY OWNERS CAN OPERATE THE LIFT



ENABLING KEY INSIDE THE CABIN

ONLY THE KEY OWNERS CAN OPERATE THE LIFT FROM INSIDE THE CABIN



2

PIN CODE AT LANDING

THOSE WHO KNOW THE PIN CODE CAN CALL THE LIFT USING THE PUSH-BUTTONS AT LANDING



PIN CODE INSIDE THE CABIN

THOSE WHO KNOW THE PIN CODE CAN OPERATE THE LIFT PRESSING THE RELEVANT PUSH-BUTTONS ON THE COP



3

ANTI-INTRUSION SAFETY KEY FOR SWING DOORS

SAFETY KEY TO PREVENT ACCESS TO LIFT ON OUTDOOR LANDINGS



MANUAL UNLOCK DEVICE FOR SWING DOORS

ALLOWS TO MANUALLY OPEN THE SWING DOOR FROM INSIDE THE CABIN



4

GUEST ACCESS *

FREE OPERATION:
TO ENABLE THE USE OF THE LIFT TO THIRD PARTIES FOR A LIMITED TIME

PRIVATE OPERATION:
TO ENABLE THE USE OF THE LIFT TO THIRD PARTIES TO REACH EXCLUSIVELY THE DESIRED FLOOR

* AVAILABLE IN COMBINATION WITH ENABLING KEY AND PIN CODE

BUTTONS



ROUND BUTTONS AT LANDINGS AND INSIDE THE CABIN

WITH BLUE OR GREY PLATE AND ELLIPTICAL CHROMED RING IN GUNMETAL GREY.
ALL THE BUTTONS ARE SUPPLIED WITH EMBOSSED NUMBER OR SYMBOL (IN COMPLIANCE WITH EN NORM 81-70)
AND TRANSLATION IN BRAILLE ALPHABET (IN COMPLIANCE WITH DM 236/89).

DISPLAYS



**LCD DISPLAY
INSIDE CABIN**

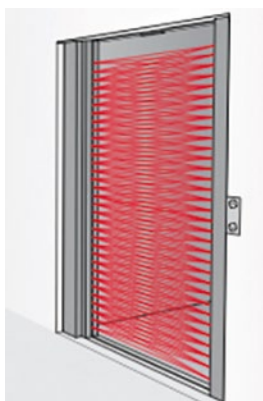
**BLACK-MULTICOLOR
LCD DISPLAY
AT LANDING
(WITH DIAGNOSTICS)**



**TFT DISPLAY
INSIDE CABIN**

NEW

SAFETY



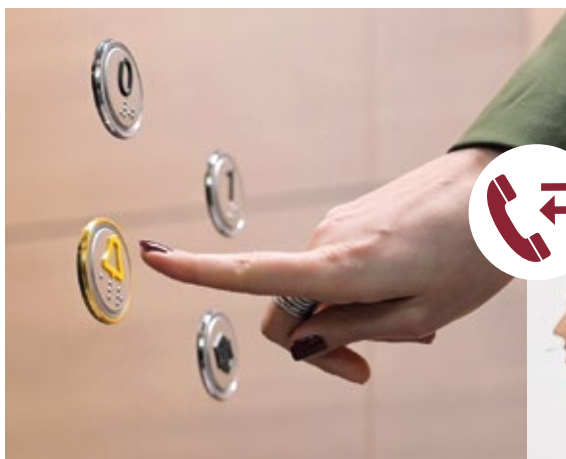
INFRA RED SMART DOORS

THE SYSTEM MONITORS THAT OBSTACLES ARE CLEAR
ALONG THE ENTIRE HEIGHT OF THE DOOR

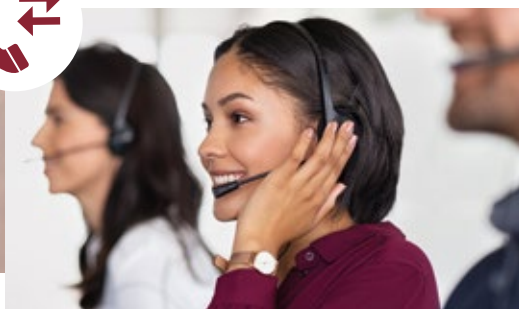


TELEPHONE HANDSET IN CABIN

THE DEVICE IS DIRECTLY CONNECTED TO THE FIXED TELEPHONE
LINE TO CALL OUTSIDE THE BUILDING FROM THE CABIN




- PSTN AUTO-DIALER FOR FIXED LINE
- PSTN-AUTO DIALER WITH GSM-LINK MODULE
- GSM-LINK MODULE



REMOTE ASSISTANCE

"SMART" REMOTE ASSISTANCE SYSTEMS THAT ALLOWS PASSENGERS TO SEND THE ALARM
STRAIGHT TO A RESCUE CENTER

 The images displayed in this catalogue are for illustrative purposes only and do not bind the Company. The colours of the finishes may differ as compared to those in the printed images. The materials displayed in this catalogue are subject to change. For the updated range of colours and materials, please visit our website: www.novaelevators.it/en.

DOORS

| CLASSIC | SUPERIOR | | EXCLUSIVE | | | | | |
|-----------|-------------------------------|-----------------------------|---------------|------------|---------------|-----------|---------------|--------|
| Skinplate | Wood effect horizontal panels | Wood effect vertical panels | Potter's Clay | Shark skin | Balance Space | Cosy Time | Black Diamond | Rewind |

SWING DOORS

| | | | | | | | | | |
|---------|---|---|---|---|---|---|---|---|---|
| EMMA | ■ | □ | □ | □ | □ | □ | □ | □ | □ |
| ANNA | □ | □ | □ | □ | □ | □ | □ | □ | □ |
| GRAPH | □ | □ | □ | □ | □ | □ | □ | □ | □ |
| KRYSTAL | □ | □ | □ | □ | □ | □ | □ | □ | □ |

ALUMINIUM SWING DOORS

| | | | | | | | | | |
|--------------|---|---|---|---|---|---|---|---|---|
| LUMINA BROWN | □ | □ | □ | □ | □ | □ | □ | □ | □ |
| LUMINA BLACK | □ | □ | □ | □ | □ | □ | □ | □ | □ |
| LUMINA WHITE | □ | □ | □ | □ | □ | □ | □ | □ | □ |
| I-LUMINA | □ | □ | □ | □ | □ | □ | □ | □ | □ |

AUTOMATIC DOORS

| | | | | | | | | | |
|--------------------------------|---|---|---|---|---|---|---|---|---|
| FOLDING STAINLESS STEEL DOOR | □ | □ | □ | □ | □ | □ | □ | □ | □ |
| FOLDING GLASS DOOR | □ | □ | □ | □ | □ | □ | □ | □ | □ |
| SLIDING DOOR WITH BLIND PANEL | □ | □ | □ | □ | □ | □ | □ | □ | □ |
| SLIDING DOOR WITH FRAMED GLASS | □ | □ | □ | □ | □ | □ | □ | □ | □ |

WALLS

SKINPLATE

| | | | | | | | | | |
|---|---|---|---|---|---|---|---|---|---|
| MATT-TEXTURE LOOK A1 OPTICAL WHITE | ■ | - | - | - | - | - | - | - | - |
| MATT-TEXTURE LOOK A4 MILK WHITE | ■ | - | - | - | - | - | - | - | - |
| MATT-TEXTURE LOOK A13 BEIGE | ■ | - | - | - | - | - | - | - | - |
| MATT-TEXTURE LOOK N1 LIGHT GREY | ■ | - | - | - | - | - | - | - | - |
| MATT-TEXTURE LOOK B13 LIGHT BLUE | ■ | - | - | - | - | - | - | - | - |
| MATT-TEXTURE LOOK G1 CREAM | ■ | - | - | - | - | - | - | - | - |
| METALLIC-LOOK F12PPS STAINLESS-STEEL | ■ | - | - | - | - | - | - | - | - |
| GLOSS MARBLE-LOOK PPS10 WHITE | ■ | - | - | - | - | - | - | - | - |
| GLOSS MARBLE-LOOK PPS11 IVORY | ■ | - | - | - | - | - | - | - | - |
| GLOSS MARBLE-LOOK PPS12 SEA WATER | ■ | - | - | - | - | - | - | - | - |
| MIRROR-LOOK A32PP GLOSS WHITE | ■ | - | - | - | - | - | - | ■ | - |
| MIRROR-LOOK N3PP GLOSS BLACK | ■ | - | - | - | - | - | - | ■ | - |
| WOOD-LOOK DL 39CE | ■ | - | - | - | - | - | - | - | - |

LEGEND

■ STANDARD □ OPTIONAL - NOT AVAILABLE

WALLS

| CLASSIC | SUPERIOR | | EXCLUSIVE | | | | | | |
|-----------|-------------------------------|-----------------------------|---------------|------------|---------------|-----------|---------------|--------|--|
| Skinplate | Wood effect horizontal panels | Wood effect vertical panels | Potter's Clay | Shark skin | Balance Space | Cosy Time | Black Diamond | Rewind | |

PLASTIC LAMINATE - WOOD-LOOK WITH VEINING

| | | | | | | | | | |
|-------------------------------|---|---|---|---|---|---|---|---|---|
| DOUGLAS ICE 388 MICROLINE | - | ■ | ■ | - | - | - | - | - | - |
| ACERO OTTAWA 385 PAPIER | - | ■ | ■ | - | - | - | - | - | - |
| DOUGLAS VANILLA 381 MICROLINE | - | ■ | ■ | - | - | - | - | - | - |
| DOUGLAS 387 MICROLINE | - | ■ | ■ | ■ | - | - | - | - | - |
| TEAK SUMATRA 1612 ROOT | - | ■ | ■ | - | - | - | - | - | - |
| ROVERE TENNESSEE 656 HOLZ | - | ■ | ■ | - | ■ | - | - | - | - |

NATURAL WOOD

| | | | | | | | | | |
|-----------------|---|---|---|---|---|---|---|---|---|
| ROVERE STILNOVO | - | - | - | - | - | ■ | - | - | - |
|-----------------|---|---|---|---|---|---|---|---|---|

FABRIC-LOOK

| | | | | | | | | | |
|-------------------------|---|---|---|---|---|---|---|---|---|
| FLOOWER WOVEN WW1209-10 | - | - | - | - | - | - | ■ | - | - |
|-------------------------|---|---|---|---|---|---|---|---|---|

STAINLESS STEEL

| | | | | | | | | | |
|---------------|---|---|---|---|---|---|---|---|---|
| SATIN | □ | □ | ■ | - | - | - | - | - | - |
| POLISHED | □ | □ | □ | - | - | - | - | - | - |
| LINEN | □ | - | - | - | - | - | - | - | - |
| WAVY POLISHED | - | - | - | - | - | - | - | - | ■ |
| GOLD | □ | □ | □ | - | - | - | - | - | - |

TEXTILE MATT

| | | | | | | | | | |
|-------------------------|---|---|---|---|---|---|---|---|---|
| LIGHT GREY FEBRUARY 8 | □ | - | - | - | - | - | - | - | - |
| PURE WHITE TEXTURE 9010 | □ | - | - | - | - | - | - | - | - |
| DEEP BLACK TEXTURE 9005 | □ | - | - | - | - | - | - | - | - |
| CORTEN-LOOK F355YZ | □ | - | - | - | - | - | - | - | - |

RAL COLORS

| | | | | | | | | | |
|----------------------|---|---|---|---|---|---|---|---|---|
| 6011 RESEA GREEN | ■ | - | - | - | - | - | - | - | - |
| 1014 IVORY | ■ | - | - | - | - | - | - | - | - |
| 1015 LIGHT IVORY | ■ | - | - | - | - | - | - | - | - |
| 5024 PASTEL BLUE | ■ | - | - | - | - | - | - | - | - |
| 7016 ANTHRACITE GREY | ■ | - | - | - | - | - | - | - | - |
| 9005 DEEP BLACK | ■ | - | - | - | - | - | - | - | - |
| 7001 SILVER GREY | ■ | - | - | - | - | - | - | - | - |
| 8002 SIGNAL BROWN | ■ | - | - | - | - | - | - | - | - |
| 8017 CHOCOLATE BROWN | ■ | - | - | - | - | - | - | - | - |
| 9001 CREAM WHITE | ■ | - | - | - | - | - | - | - | - |
| 9010 PURE WHITE | ■ | - | - | - | - | - | - | - | - |

WINDOW TYPES

| | | | | | | | | | |
|-------------------------|---|---|---|---|---|---|---|---|---|
| FULL-WIDTH, HALF-HEIGHT | □ | □ | □ | □ | □ | □ | □ | □ | □ |
| FULL-WIDTH, FULL-HEIGHT | □ | □ | □ | □ | □ | □ | □ | □ | □ |

FLOORS

| CLASSIC | SUPERIOR | | EXCLUSIVE | | | | | |
|-----------|-------------------------------|-----------------------------|---------------|------------|---------------|-----------|---------------|--------|
| Skinplate | Wood effect horizontal panels | Wood effect vertical panels | Potter's Clay | Shark skin | Balance Space | Cosy Time | Black Diamond | Rewind |

PVC

| | | | | | | | | | |
|--|---|---|---|---|---|---|---|---|---|
| ANTI-SLIP - GHIACCIO | ■ | ■ | ■ | - | - | ■ | - | - | - |
| ANTI-SLIP - GRIGIO | ■ | ■ | ■ | - | - | - | - | - | - |
| ANTI-SLIP - SABBIA | ■ | ■ | ■ | - | - | - | - | - | - |
| ANTI-SLIP - BLU | ■ | - | - | - | - | - | - | - | - |
| ANTI-SLIP - NERO | ■ | ■ | ■ | - | - | - | - | - | - |
| ANTI-SLIP - G3 BOLLI (BLACK) | □ | - | - | - | - | - | - | - | - |
| ANTI-SLIP - G1 BOLLI (GREY) | □ | - | - | - | - | - | - | - | - |
| CONCRETE-LOOK - SILVER CONCRETE ETERNAL MATERIAL 13002 | □ | ■ | ■ | ■ | - | - | - | - | - |
| WOOD-LOOK ETERNAL WOOD LIGHT OAK 13442 | □ | ■ | ■ | - | ■ | - | - | - | - |

GRANITE

| | | | | | | | | | |
|---------------|---|---|---|---|---|---|---|---|---|
| WHITE STAR | □ | □ | □ | - | - | - | - | - | - |
| CREMA LUNA | □ | □ | □ | - | - | - | - | - | - |
| DOVE TAIL | □ | □ | □ | - | - | - | - | - | - |
| BLACK DIAMOND | □ | □ | □ | - | - | - | - | - | - |
| CHIARO AMBRA | □ | □ | □ | - | - | - | - | - | - |

NATURAL WOOD

| | | | | | | | | | |
|--------------------|---|---|---|---|---|---|---|---|---|
| ROVERE STILNOVO | □ | □ | □ | - | - | ■ | - | - | - |
| ROVERE VELVET MAXI | □ | □ | □ | - | - | - | - | - | ■ |

FABRIC FABRIC-LOOK

| | | | | | | | | | |
|-------------------------|---|---|---|---|---|---|---|---|---|
| FLOOVER WOVEN WW1209-10 | - | - | - | - | - | - | ■ | - | - |
|-------------------------|---|---|---|---|---|---|---|---|---|

LED LIGHTING

| | | | | | | | | | |
|--------------------|---|---|---|---|---|---|---|---|---|
| 2 X LED DOWNLIGHTS | ■ | ■ | ■ | - | - | - | - | - | - |
| 4 X LED DOWNLIGHTS | ■ | ■ | ■ | - | - | - | - | - | - |
| LED PANEL | ■ | ■ | ■ | - | - | - | - | - | - |
| LED SOFT | □ | □ | □ | - | - | ■ | ■ | - | ■ |
| LED ZODIACO | □ | □ | □ | - | - | - | - | - | - |
| LED BLACK DIAMOND | □ | □ | □ | - | - | - | - | ■ | - |
| LED POTTER'S CLAY | □ | □ | □ | ■ | - | - | - | - | - |
| LED SHARK SKIN | □ | □ | □ | - | ■ | - | - | - | - |

LEGEND

■ STANDARD □ OPTIONAL - NOT AVAILABLE

ACCESSORIES

| CLASSIC | SUPERIOR | | EXCLUSIVE | | | | | |
|-----------|-------------------------------|-----------------------------|---------------|------------|---------------|-----------|---------------|--------|
| Skinplate | Wood effect horizontal panels | Wood effect vertical panels | Potter's Clay | Shark skin | Balance Space | Cosy Time | Black Diamond | Rewind |

RESTRICTED ACCESS

| | | | | | | | | | |
|---|--------------------------|--------------------------|--------------------------|--------------------------|--------------------------|--------------------------|--------------------------|--------------------------|--------------------------|
| ENABLING KEY AT LANDING | <input type="checkbox"/> | <input type="checkbox"/> | <input type="checkbox"/> | <input type="checkbox"/> | <input type="checkbox"/> | <input type="checkbox"/> | <input type="checkbox"/> | <input type="checkbox"/> | <input type="checkbox"/> |
| ENABLING KEY IN CABIN | <input type="checkbox"/> | <input type="checkbox"/> | <input type="checkbox"/> | <input type="checkbox"/> | <input type="checkbox"/> | <input type="checkbox"/> | <input type="checkbox"/> | <input type="checkbox"/> | <input type="checkbox"/> |
| PIN CODE AT LANDING | <input type="checkbox"/> | <input type="checkbox"/> | <input type="checkbox"/> | <input type="checkbox"/> | <input type="checkbox"/> | <input type="checkbox"/> | <input type="checkbox"/> | <input type="checkbox"/> | <input type="checkbox"/> |
| PIN CODE IN CABIN | <input type="checkbox"/> | <input type="checkbox"/> | <input type="checkbox"/> | <input type="checkbox"/> | <input type="checkbox"/> | <input type="checkbox"/> | <input type="checkbox"/> | <input type="checkbox"/> | <input type="checkbox"/> |
| ANTI-INTRUSION SAFETY KEY FOR SWING DOORS | <input type="checkbox"/> | <input type="checkbox"/> | <input type="checkbox"/> | <input type="checkbox"/> | <input type="checkbox"/> | <input type="checkbox"/> | <input type="checkbox"/> | <input type="checkbox"/> | <input type="checkbox"/> |
| MANUAL UNLOCK DEVICE FOR SWING DOORS | <input type="checkbox"/> | <input type="checkbox"/> | <input type="checkbox"/> | <input type="checkbox"/> | <input type="checkbox"/> | <input type="checkbox"/> | <input type="checkbox"/> | <input type="checkbox"/> | <input type="checkbox"/> |
| GUEST ACCESS | <input type="checkbox"/> | <input type="checkbox"/> | <input type="checkbox"/> | <input type="checkbox"/> | <input type="checkbox"/> | <input type="checkbox"/> | <input type="checkbox"/> | <input type="checkbox"/> | <input type="checkbox"/> |

BUTTONS

| | | | | | | | | | |
|------|-------------------------------------|-------------------------------------|-------------------------------------|-------------------------------------|-------------------------------------|-------------------------------------|-------------------------------------|-------------------------------------|-------------------------------------|
| GREY | <input checked="" type="checkbox"/> | <input checked="" type="checkbox"/> | <input checked="" type="checkbox"/> | <input checked="" type="checkbox"/> | <input checked="" type="checkbox"/> | <input checked="" type="checkbox"/> | <input checked="" type="checkbox"/> | <input checked="" type="checkbox"/> | <input checked="" type="checkbox"/> |
| BLUE | <input type="checkbox"/> | <input type="checkbox"/> | <input type="checkbox"/> | <input type="checkbox"/> | <input type="checkbox"/> | <input type="checkbox"/> | <input type="checkbox"/> | <input type="checkbox"/> | <input type="checkbox"/> |

DISPLAY

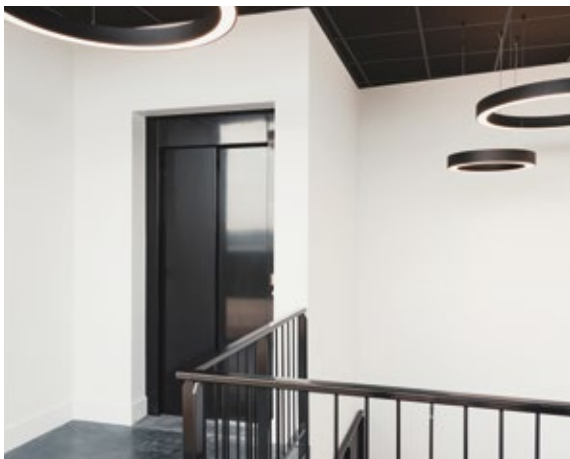
| | | | | | | | | | |
|---|--------------------------|--------------------------|--------------------------|--------------------------|--------------------------|--------------------------|--------------------------|--------------------------|--------------------------|
| LCD DISPLAY INSIDE CABIN | <input type="checkbox"/> | <input type="checkbox"/> | <input type="checkbox"/> | <input type="checkbox"/> | <input type="checkbox"/> | <input type="checkbox"/> | <input type="checkbox"/> | <input type="checkbox"/> | <input type="checkbox"/> |
| BLACK-MULTICOLOR LCD DISPLAY AT LANDING | <input type="checkbox"/> | <input type="checkbox"/> | <input type="checkbox"/> | <input type="checkbox"/> | <input type="checkbox"/> | <input type="checkbox"/> | <input type="checkbox"/> | <input type="checkbox"/> | <input type="checkbox"/> |
| TFT DISPLAY INSIDE CABIN | <input type="checkbox"/> | <input type="checkbox"/> | <input type="checkbox"/> | <input type="checkbox"/> | <input type="checkbox"/> | <input type="checkbox"/> | <input type="checkbox"/> | <input type="checkbox"/> | <input type="checkbox"/> |

SAFETY

| | | | | | | | | | |
|---------------------------------------|--------------------------|--------------------------|--------------------------|--------------------------|--------------------------|--------------------------|--------------------------|--------------------------|--------------------------|
| INFRA RED BARRIER | <input type="checkbox"/> | <input type="checkbox"/> | <input type="checkbox"/> | <input type="checkbox"/> | <input type="checkbox"/> | <input type="checkbox"/> | <input type="checkbox"/> | <input type="checkbox"/> | <input type="checkbox"/> |
| TELEPHONE HANDSET IN CABIN | <input type="checkbox"/> | <input type="checkbox"/> | <input type="checkbox"/> | <input type="checkbox"/> | <input type="checkbox"/> | <input type="checkbox"/> | <input type="checkbox"/> | <input type="checkbox"/> | <input type="checkbox"/> |
| PSTN AUTO-DIALER FOR FIXED LINE | <input type="checkbox"/> | <input type="checkbox"/> | <input type="checkbox"/> | <input type="checkbox"/> | <input type="checkbox"/> | <input type="checkbox"/> | <input type="checkbox"/> | <input type="checkbox"/> | <input type="checkbox"/> |
| PSTN AUTO-DIALER WITH GSM-LINK MODULE | <input type="checkbox"/> | <input type="checkbox"/> | <input type="checkbox"/> | <input type="checkbox"/> | <input type="checkbox"/> | <input type="checkbox"/> | <input type="checkbox"/> | <input type="checkbox"/> | <input type="checkbox"/> |
| GSM-LINK MODULE | <input type="checkbox"/> | <input type="checkbox"/> | <input type="checkbox"/> | <input type="checkbox"/> | <input type="checkbox"/> | <input type="checkbox"/> | <input type="checkbox"/> | <input type="checkbox"/> | <input type="checkbox"/> |

COMFORT

| | | | | | | | | | |
|---|-------------------------------------|-------------------------------------|-------------------------------------|-------------------------------------|-------------------------------------|-------------------------------------|-------------------------------------|-------------------------------------|-------------------------------------|
| CURVED HANDRAIL IN STAINLESS STEEL ON COP | <input type="checkbox"/> | <input type="checkbox"/> | <input type="checkbox"/> | <input type="checkbox"/> | <input checked="" type="checkbox"/> | - | - | <input type="checkbox"/> | - |
| STAINLESS STEEL HANDRAIL WITH STRAIGHT ENDS | <input type="checkbox"/> | <input type="checkbox"/> | <input type="checkbox"/> | <input type="checkbox"/> | <input type="checkbox"/> | - | - | <input type="checkbox"/> | - |
| STAINLESS STEEL HANDRAIL WITH CURVED ENDS | <input type="checkbox"/> | <input type="checkbox"/> | <input type="checkbox"/> | <input type="checkbox"/> | <input type="checkbox"/> | - | - | <input type="checkbox"/> | - |
| AXIAL CABIN FAN | <input type="checkbox"/> | <input type="checkbox"/> | <input type="checkbox"/> | <input type="checkbox"/> | <input type="checkbox"/> | <input type="checkbox"/> | <input type="checkbox"/> | <input type="checkbox"/> | <input type="checkbox"/> |
| CROSS-FLOW CABIN FAN | <input type="checkbox"/> | <input type="checkbox"/> | <input type="checkbox"/> | <input type="checkbox"/> | <input type="checkbox"/> | <input type="checkbox"/> | <input type="checkbox"/> | <input type="checkbox"/> | <input type="checkbox"/> |
| FOLDABLE SEAT IN WHITE PLEXIGLASS | <input type="checkbox"/> | <input type="checkbox"/> | <input type="checkbox"/> | <input type="checkbox"/> | <input type="checkbox"/> | - | - | <input type="checkbox"/> | - |
| BASIC MIRROR 740 X 1050 MM | <input type="checkbox"/> | <input type="checkbox"/> | <input type="checkbox"/> | <input type="checkbox"/> | <input type="checkbox"/> | - | - | - | - |
| HALF-WALL MIRROR | <input type="checkbox"/> | <input type="checkbox"/> | <input type="checkbox"/> | <input type="checkbox"/> | <input type="checkbox"/> | - | - | - | - |
| FULL-WIDTH, FULL-HEIGHT MIRROR | <input type="checkbox"/> | <input type="checkbox"/> | <input type="checkbox"/> | <input type="checkbox"/> | <input type="checkbox"/> | <input checked="" type="checkbox"/> | - | <input checked="" type="checkbox"/> | - |
| AUTOMATIC OPENING SYSTEM FOR SWING DOORS | <input type="checkbox"/> | <input type="checkbox"/> | <input type="checkbox"/> | <input type="checkbox"/> | <input type="checkbox"/> | <input type="checkbox"/> | <input type="checkbox"/> | <input type="checkbox"/> | <input type="checkbox"/> |
| GEARLESS/HYDRAULIC CABINET | <input checked="" type="checkbox"/> | <input checked="" type="checkbox"/> | <input checked="" type="checkbox"/> | <input checked="" type="checkbox"/> | <input checked="" type="checkbox"/> | <input checked="" type="checkbox"/> | <input checked="" type="checkbox"/> | <input checked="" type="checkbox"/> | <input checked="" type="checkbox"/> |



For 30 years NOVA Elevators and the Govoni family have been committed to ensuring quality and attention to detail in over 1000 projects entrusted by our customers every year in over 30 Countries worldwide.

NOVA Elevators has always operated with professionalism, experience, determination and effectiveness: our daily ingredients to **produce quality**.



NOVA S.r.l.
Via G. Galilei, 116/c
40014 Palata Pepoli - Crevalcore (Bologna) - Italy
Tel. +39 051 985330
E-mail: info@mondonova.it

www.novaelevators.it



Member of



FOLLOW US!



These technical specifications and images are intended for illustrative purposes and are not binding for the company.
NOVA S.r.l. reserves the right to make any changes at any time it considers appropriate.
All rights reserved. Even partial reproduction of this catalog is forbidden without the consent of NOVA S.r.l.

Ed. 04-2022